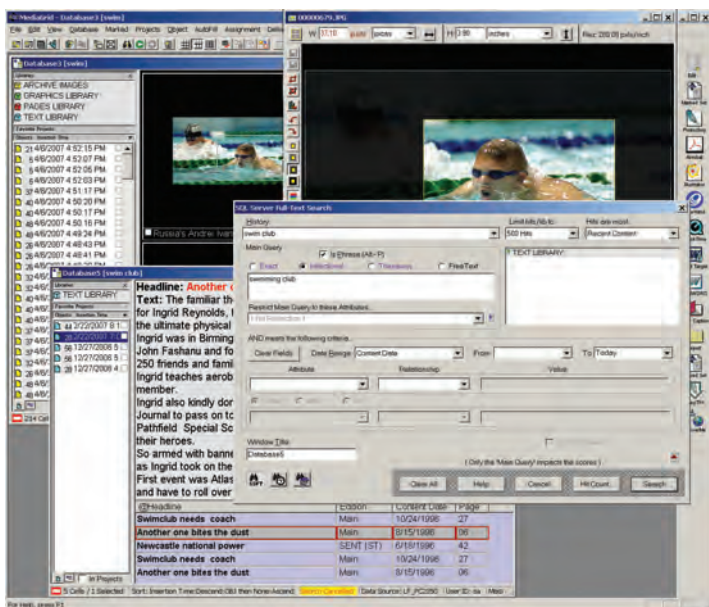


SCC MediaServer Express Edition for Microsoft Windows provides a low-cost but high-end introduction to multimedia content management. Just like its larger sibling, SCC MediaServer Express Edition supports the insertion of digital photos, graphics, text files, complete page documents as well as sound and video clips, and incorporates SCC MediaGrid for both Windows and Macintosh OSX as well as providing support for standard Web browsers to search, browse and edit and download them.



Introducing SCC MediaServer Express Edition

SCC MediaServer Express Edition is a fully equipped multimedia content management system, both as a live photo and graphics desk and as an integrated archive, with input from wire services and remote subscribers, as well as links to third party production systems, providing rapid access to stored files from a single software client.

SCC MediaServer Express Edition supports the creation of any number of "Libraries" for the storage of a variety of multimedia file types. The MediaServer Admin Utility allows the system administrator to create templates containing any number of custom field attributes (text strings, text lists, date/number fields, and so on) for use during the creation of these libraries.

Metadata associated with Photos, Text, Graphics, Pages, Sound and Video files, when added into the system or later modified, is automatically indexed by the Microsoft Full-Text Search engine incorporated into SQL Server Express Edition and is immediately available for searching.

Incoming items are typically placed in temporary "Production Libraries", while published material and those items judged worthy of being archived for future use are later transferred to long term "Archive Libraries". High resolution files referenced by the MediaServer Express Edition database can reside on any network accessible storage.

An automatic purge process, set according to the users specifications, deletes files not selected for archive based on any criteria (age, number of files, matching values etc.) decided upon by the system administrator.

SCC MediaGrid clients on both Windows and Macintosh OSX,

as well as Web browser clients, access the SCC MediaServer Express Edition system using TCP/IP networking protocols and are not required to mount server volumes on their workstation desktop in order to download stored files.

Multiple Library Search

The user has the ability to search across multiple libraries on the MediaServer Express Edition server at the same time, using both Production (time range) searches and Full-Text searches. The Lucene Full-Text Search engine employed within SCC MediaServer Express Edition provides sophisticated search capabilities including word, phrase, stemmed, proximity, wildcard and thesaurus searches.

The most recent 25 search queries are maintained in a search history for easy recall. Search criteria can also be stored on disk and then recalled quickly, as needed, by one or more users.

Scalable Solution

The MediaServer Express Edition system is tied to Microsoft's SQL Server Express Edition with Advanced Services, which is a free, downloadable, easy-to-use, and lightweight version of SQL Server. MediaServer Express Edition supports a maximum 4 GB database, which is sufficient to hold the metadata for 300,000 to 400,000 objects.

The 4 GB database limit impacts only the small thumbnail and metadata content within the database, not the high-resolution files and large previews that are stored in the server's file system. The total size of the high-resolution files and previews referenced by the Express Edition database is typically much greater than 4 GB.

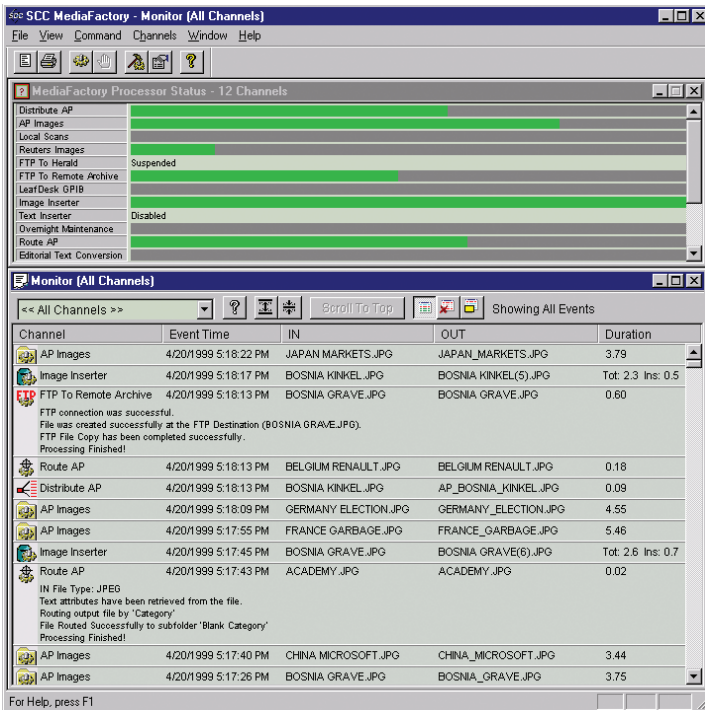
If at any time in the future a site expands their operations beyond the 4 GB database capacity they then have the option of adding additional MediaServer Express Edition systems to run parallel to the first, or to trade in the Express Edition system at full value against the cost of an SCC MediaServer Enterprise Edition system, the latter having effectively no database size restriction.

Data Flow Into and From The System

SCC MediaServer Express Edition includes a license for SCC MediaFactory, a multi-threaded batch processing application for Microsoft Windows. MediaFactory polls network directories for files to be processed and automatically inserts them into the SCC MediaServer Express Edition database.

Photos and graphics received from wire services such as AP, Reuters, AFP, etc., as well as those produced internally, are processed by SCC MediaFactory. Embedded XMP, EXIF, IPTC and other custom metadata as well as thumbnail, preview and optional hires preview information is automatically extracted and mapped to attribute fields within the SCC MediaServer Express Edition database.

SCC MediaServer™ Express Edition



Text in a variety of formats received from incoming wire feeds, saved from completed pages or exported from third party editorial systems is processed by SCC MediaFactory, at which time customized character and text string translation can be performed with data from each structured field in the input file being mapped to attribute fields in the MediaServer Express Edition database.

Complete pages and documents saved in Acrobat PDF format are processed by SCC MediaFactory. Thumbnails are created and all text contained in the document is extracted before being inserted into the MediaServer Express Edition database. All words contained in the documents are indexed and searchable.

Multimedia files such as sound and video clips can also be processed automatically by SCC MediaFactory and inserted into the SCC MediaServer database.

SCC MediaGrid's "Infuse" feature allows batch editing of records within a MediaServer database using a single editing dialog. With this feature a Photographer can write a single caption and apply it to multiple photos, or a Librarian can add one or more keywords to a batch of archived documents simultaneously.

SCC MediaGrid supports exporting and proofing selected records individually or in batches. Customized proof layouts can be created using SCC Layout Designer supplied with the system.

System Performance Factors

Like its larger sibling, SCC MediaServer Express Edition is optimized for high speed search and retrieval. Only the minimum amount of data necessary for display on the client screen is transferred at one time, with additional data being retrieved only as the user pages down through the result set.

SCC MediaServer Express Edition makes use of transaction processing, an integral part of the Microsoft SQL Server database management system and Lucene Full-Text Search engine, to maintain data integrity and avoid corruption while updating database content and indexes.

The MediaServer Express Edition system performs self-maintenance and optimization automatically.

Access and Security Factors

The user's login and password determines their profile within the SCC MediaServer Express Edition system, which can either be set per user or inherited as part of group privileges.

Many functions within the system can be enabled or disabled for individual users and groups. These include the ability for a user or group to insert, view, search, crop, edit, protect, download, delete, undelete, print etc.

The SCC User Manager utility is available both as a stand-alone application, or as a snap-in to Microsoft's Active Directory management interface.

SCC MediaServer System Requirements

Microsoft Windows 2003/2008 Server

Microsoft SQL Server Express Edition with Advanced Services

Minimum 8 GB RAM

Sufficient disk storage for both the database and high-resolution files.

