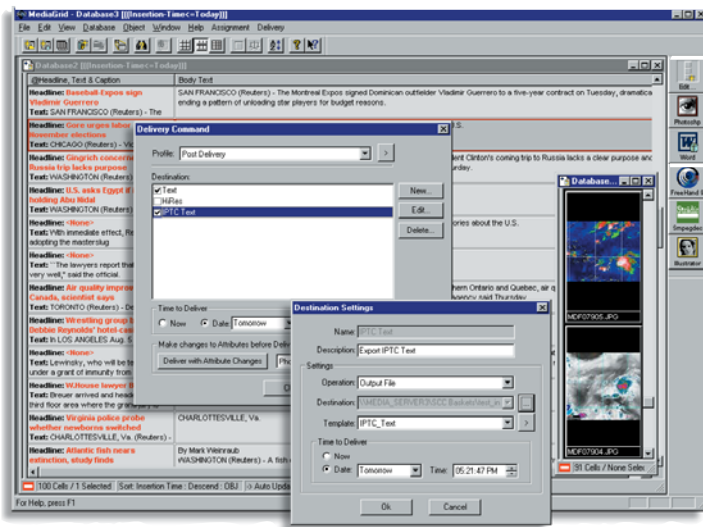




The Delivery Module enables automated delivery of documents stored within an SCC MediaServer system. The module supports multiple destinations each configured with a time to send, an output format and an output location e.g. print queue, network directory, FTP site or Email address.

The SCC MediaServer Delivery Module allows documents stored inside the MediaServer database to be marked for automated delivery to one or more destinations. Any number of destinations can be created or modified by the System Administrator at any time while the system is operational. Destinations can also be added together as a commonly used "Profile" allowing easy selection of multiple locations.



Server Side Functionality

The advantage of the Delivery Module is that all movement of files, including high-resolution files, is performed server side and not by the client. For example an instruction to place a copy of a 20Mb file can be issued in a matter of seconds from a Web browser or SCC MediaGrid anywhere in the world and for that file to be copied by the server without any impact on performance.

Each destination contains a choice of output location, either to a folder on the network, to a print queue, to an FTP site or an Email address. The destination also includes a date and time to send, either "Now" or at a predetermined time in the future e.g. "Today+1 @ 2:00 am". Finally the destination includes an output template containing a set of commands that control the format and content of the delivered file. The output template is actually an XML file built from a suite of SCC defined tags and related parameters.

A typical use of the Delivery Module might be to automatically format and deliver published text files, initially received from an editorial system, to news agencies such as Data Times, Lexis-Nexis and AP, as well as to a Web site. Another use could be for an SCC MediaGrid or Web browser client to request delivery of a high resolution object such as a photo or graphic and for the server to then output that object either to a production output directory or to an Email address submitted by the client.

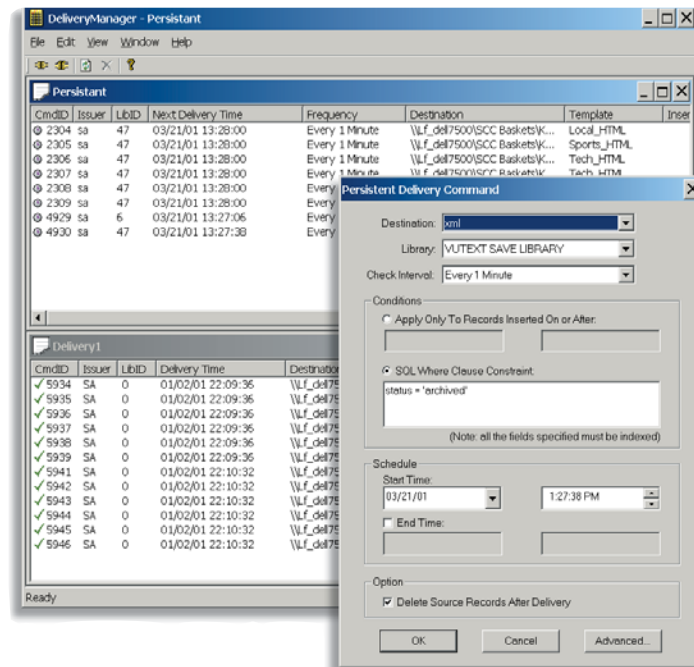
Files can be marked for delivery either from within SCC MediaGrid, from a Web browser, or by a persistent command created within the SCC Delivery Manager.

SCC MediaGrid Delivery

When connected to a MediaServer database equipped with the Delivery module, MediaGrid dynamically adds a new "Delivery" item to its menu bar. Files can be selected either individually or in batches and delivered by selecting the "F6" key and selecting a destination "Profile" from an available list. Depending on user permissions, the user may be able to select individual destinations (other than from a profile list) and also override the time to send.

Delivery Manager

The SCC Delivery Manager allows the creation of "persistent" delivery commands. These delivery commands monitor selected MediaServer libraries for files matching certain criteria, and if a match is made they are marked for automatic delivery to the destination configured within the command.



The Delivery module incorporates "Done" and "Error" tables, which record the status of delivered files. These tables are purged according to custom preferences during MediaServer's maintenance procedures. In addition a custom string can be added to each sent record maintaining an audit trail of a files delivery history.